

# Fact Sheet

## Susquehanna-Roseland Power Line

June 2008

### Electric System Upgrades Needed To Ensure Reliability

#### PPL Electric Utilities Identifies Alternative Routes for System Upgrades, Will Pick One After Considering Public Input.

#### Introduction

To ensure safe, reliable electric service for residents and businesses in eastern and northeastern Pennsylvania and the mid-Atlantic region, PPL Electric Utilities will need to upgrade some of its electrical systems. This fact sheet is intended to provide you with information on our plans and to encourage your input so that we can incorporate your preferences into our plans whenever we can. In identifying alternative routes, we have given priority to areas where lines already exist or where the company already owns property or property rights. Where feasible, we will perform work along corridors where transmission lines already exist. Some work will be needed in areas where PPL Electric Utilities owns land rights but has not yet built transmission facilities and, in some spots, new rights of way will need to be acquired. You are receiving this fact sheet because you may live, work or own property in an area that may be affected by this potential work.

#### Background

PJM Interconnection, the regional electricity transmission organization for a 13-state region - including Pennsylvania - has determined that if upgrades to the electric delivery system are not made by May 2012, there is the potential for overloads and power outages here in eastern and northeastern Pennsylvania and throughout the region.

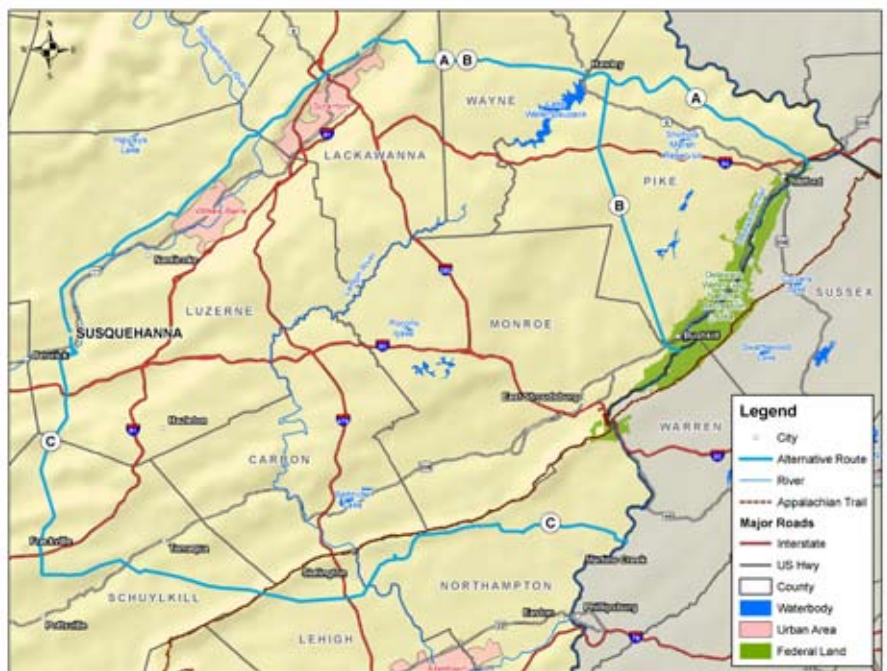
One of the specific upgrades that PJM is requiring is the installation of a new 500-kilovolt (kV) transmission line from a PPL Electric Utilities switching station near Berwick, Pa., to Public Service Electric and Gas Company's (PSE&G) Roseland substation in Roseland, N.J. The Pennsylvania portion of the line will be built by PPL Electric Utilities and the New Jersey portion of the line will be built by PSE&G.

#### Choosing a Route for the Upgrades

PPL Electric Utilities has identified three alternative routes that could be used for this project and plans to pick one of those routes after considering public input. Where practical, the routes follow paths of existing power lines or where the company already owns property or property rights. However, all of the routes require the company to acquire some amount of new right of way.

Route A begins at the PPL Electric Utilities switching station near Berwick and travels northeast through Luzerne and Lackawanna counties on the path of an existing 230-kV power line. The line then travels east through Lackawanna and Wayne counties primarily on the path of existing power lines before heading east-southeast through Pike County.

Route B begins at the PPL Electric Utilities switching station near Berwick and travels through Luzerne, Lackawanna and Wayne counties on the same power line rights of way as Route A. Route B separates from Route A at a point northeast of Lake Wallenpaupack and travels south through the Delaware State Forest on the path of an existing 230-kV power line.



Route C begins at the PPL Electric Utilities switching station near Berwick and travels south primarily on an existing future-use right of way through Luzerne and Schuylkill counties. The line then travels east primarily on future-use or existing transmission power line routes in Schuylkill and Lehigh counties. The line then moves east-northeast through Northampton County on the path of an existing power line.

After considering public input and examining the pros and cons of each potential route, we will choose one route for the project and begin working with residents along that route to minimize potential impacts and inconvenience as much as possible. Before any construction can begin, PPL Electric Utilities will seek approval from the Pennsylvania Public Utility Commission to build the new power line.

## Summary of Planned Work

Depending on the route that is chosen, PPL Electric Utilities may need to install new structures or reconfigure existing ones to ensure that they are capable of handling the additional power capacity. For instance, in some places where lattice towers are located, they may be replaced with single pole or H-frame structures capable of handling 500-kV transmission lines. During this work, planned for 2010-2012, the public may see construction activity related to the work. There may also be some tree trimming or removal needed in some areas.

When a final route is selected, we will be able to provide further detail on our plans, including how we will access the transmission lines for the upgrade work, whether the width of some existing rights of way may need to be expanded, the types of structures that will be used and their expected heights.

## Gathering Public Input

PPL Electric Utilities will be hosting a series of public workshops to gather local input on our plans. In addition we have been in touch with dozens of local, county, state and federal officials and other interested parties to hear their input. This outreach also will continue as our plans proceed. If you cannot attend one of these events, or if you just wish to speak to someone right away, please feel free to call our toll-free Susquehanna-Roseland information line at 1-800-291-5403 and someone will get back to you promptly, or you can e-mail us at [reliablepower@pplweb.com](mailto:reliablepower@pplweb.com).

PPL Electric Utilities has scheduled open houses on the following dates. There is no set agenda for these meetings and no formal presentations, so feel free to visit the open house in your area anytime between the hours of 5 p.m. and 8 p.m. We hope to see you there.

- Monday, June 16 – PPL East Mountain Business Center, 1190 East Mountain Drive, Wilkes-Barre, PA 18702
- Tuesday, June 17 – Hilton Scranton & Conference Center, 100 Adams Ave., Scranton, PA 18503
- Wednesday, June 18 – Wallenpaupack Area High School, 2552 Route 6, Hawley, PA 18428
- Thursday, June 19 – Fernwood Resort & Conference Center, Route 209 and River Road, Bushkill, PA 18324
- Monday, June 23 – Berwick Area High School, 1100 Fowler Ave., Berwick, PA 18603
- Tuesday, June 24 – Tamaqua Community Center, 229 Center St. (rear), Tamaqua, PA 18252
- Wednesday, June 25 – Forks Township Community Center, 500 Zucksville Road, Easton, PA 18040
- Thursday, June 26 – Northampton Community Center, 1601 Laubach Ave., Northampton, PA 18067

## About PPL Electric Utilities

PPL Electric Utilities is a subsidiary of PPL Corporation that provides electricity to about 1.4 million customers in 29 counties across central and eastern Pennsylvania. For more information, visit [www.pplreliablepower.com](http://www.pplreliablepower.com).

